

KOBO RESOURCES

TSX.V: KRI

Focused on High-Quality Gold Discovery

Kobo Resources Inc. is a growth-focused gold exploration company with a compelling new gold discovery in **Côte d'Ivoire**, one of **West Africa's most prolific and developing gold districts**, hosting several multi-million-ounce gold mines. The Company's 100%-owned Kossou Gold Project is located approximately 20 km northwest of the capital city of Yamoussoukro and is directly adjacent to one of the region's largest gold mines with established processing facilities.

Advancing exploration efforts on a compelling new gold discovery following the first ever drill program in 2023.



New Gold Exploration & Development Company with a Portfolio of Highly Prospective Gold Properties

The 100%-owned Kossou Gold Project ("Kossou") with large, significant Au soil anomalies, multiple high grade surface showings



Highly-Experienced Management Team with In-Country Expertise

Kobo is led by a highly experienced management team with strong in-country expertise as well as decades of experience in mineral exploration and development, mine site exposure and capital markets



Multiple Shear Zones with Gold Mineralization Identified by First Drill Program

~6,000 m reverse circulation ("RC") drilling focused on the Jagger Zone, Road Cut Zone and Contact Zone
Significant gold mineralisation at Road Cut Zone, Jagger Zone and Kadie Zones



Proximity to Nearby Operator with Similar Gold Mineralisation

Key targets at Kossou are within 7 km of the Yaouré Mine owned and operated by Perseus Mining Inc. (M&I 2.8 Moz at 1.59 g/t Au and P&P of 2.07 Moz at 1.73 g/t Au¹)



Mining Friendly Jurisdiction with Untapped Potential

Production from Ghana, Mali, Burkina Faso and Guinea has totaled over 119 Moz of gold from 2011 to 2021, dominantly from Birimian Group rocks, whereas Côte d'Ivoire has only produced 9.5 Moz in the same period²



Investor Deck



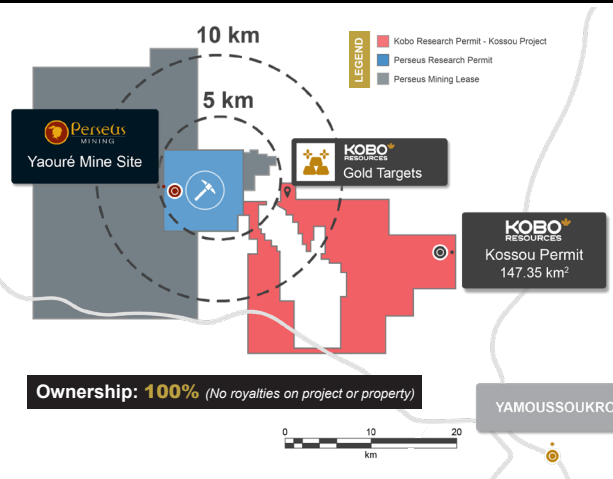
TARGET



DISCOVER

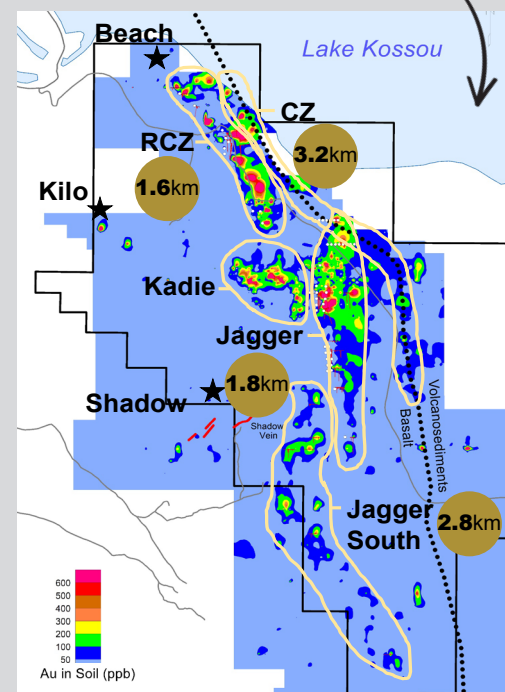


ADVANCE



- ✓ **Flagship 100%-owned Kossou Gold Project represents a new gold discovery** contiguous with Perseus Mining's Yaouré Mine with targets located <7 kilometers from the process facility
- ✓ **Strong, well defined geochemical targets:**
 - ✓ **Beach-RCZ:** ~ 1.6 km strike
 - ✓ **Jagger Zone:** ~1.8 km strike (up to 500+ m width)
 - ✓ **Jagger Zone South:** ~2.8 km strike
 - ✓ **Kadie Zone:** ~ 750 m in three distinct anomalies
- ✓ Initial drilling has successfully **confirmed significant gold mineralisation** at the Road Cut Zone and additional strong gold mineralisation within the Jagger Zone
- ✓ +300 m wide and +2 km long structural corridor with favourable shear zones, high-grade gold veins identified through mapping, geochemistry and drilling proximal to major break
- ✓ 5,887 metres drilled in 53 reverse circulation drill holes in under five weeks
- ✓ Second phase Diamond Drill Program currently being planned for Q1 2024

Over 9 km of Geochem. Anomalies to be Explored at Kossou:



Jagger Zone

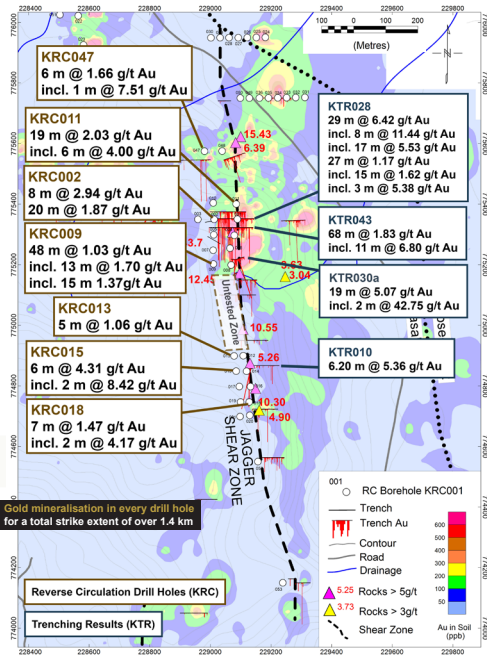
- ✓ The Jagger Zone represents the **largest and strongest soil geochemical anomaly** yet discovered at Kossou
- ✓ Strong N-S shear traced over 2 km strike, W-NW and E-W high-grade vein sets cross cut main shear

Key Drill Results:

KRC002: 8 m at 2.94 g/t Au and 20 m at 1.87 g/t Au
KRC009: 48 m at 1.03 g/t Au incl. 13 m at 1.70 g/t Au
KRC011: 19 m at 2.03 g/t Au incl. 6 m at 4.00 g/t Au
KRC015: 6 m at 4.31 g/t Au incl. 2 m at 6.42 g/t Au

Key Trench Results:

KTR028: 29 m at 6.42 g/t Au incl. 18.04 g/t Au over 5 m, 11.44 g/t Au over 8 m and 5.53 g/t Au over 17 m
KTR030a: 19 m at 5.07 g/t Au incl. 2 m at 42.75 g/t Au
KTR043: 68 m at 1.83 g/t Au incl. 11 m at 6.8 g/t Au



Road Cut Zone

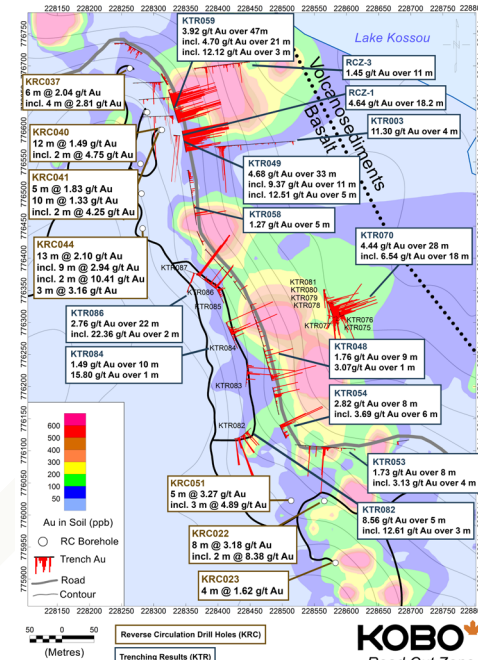
- ✓ Gold in soil geochemistry indicates that the Road Cut Zone can be traced over a strike length of 1.7 kilometers and is a prime target for continued drilling

Key Drill Results:

KRC022: 8 m at 3.18 g/t Au incl. 2 m at 8.38 g/t Au
KRC040: 12 m at 1.49 g/t Au incl. 2 m at 4.75 g/t Au
KRC044: 13 m at 2.10 g/t Au incl. 9 m at 2.94 g/t Au and 2 m at 10.41 g/t Au
KRC051: 5 m at 3.27 g/t Au

Key Trench Results:

KTR059: 47 m at 3.92 g/t Au incl. 21 m at 4.70 g/t Au
KTR049: 33 m at 4.68 g/t Au incl. 11 m at 9.37 g/t Au
KTR070: 28 m at 4.44 g/t Au incl. 18 m at 6.54 g/t Au
KTR071: 18.2 m @ 4.64 g/t Au

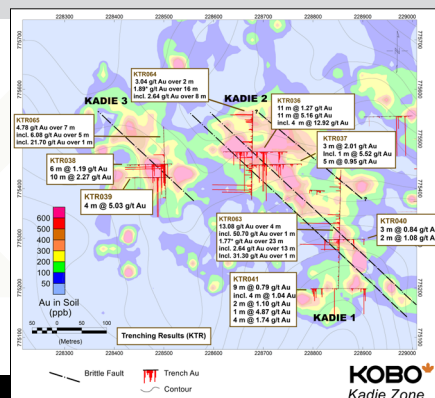


Capital Structure (as of Jan. 11, 2024)

TSX Venture Exchange Symbol	TSX.V: KRI
Price (C\$)	\$0.32
Common Shares Outstanding (M)	81.2
Warrants Outstanding (M)	10.5
Options Outstanding (M)	5.6
Market Capitalization (C\$ M)	\$26.0

Kadie Zone

- ✓ Kadie Zone targets have structural and lithological characteristics similar to those found at the prospective Jagger gold bearing shear zone
- ✓ In total, the combined Kadie Zone soil anomalies extend approximately 750 meters along strike
- ✓ **KTR036: 11 m at 5.16 g/t Au incl. 4 m at 12.92 g/t Au (Kadie 2)**
- ✓ **KTR065: 7 m at 4.78 g/t Au incl. 5 m at 6.08 g/t Au (Kadie 3)**
- ✓ **KTR063: 4 m at 13.08 g/t Au incl. 1 m at 50.70 g/t Au (Kadie 2)**



Key Shareholders

Managment & Insiders	41.2%
Delbrook Capital	6.4%
Gold2000	5.4%

Management & Directors

Edouard Gosselin	CEO, Director
Paul Sarjeant, P.Geo.	COO, Director
Chris Picken, MIMMM	Exploration Manager
Carmelo Marrelli, CPA, CA	CFO