



# FOCUSED ON HIGH-QUALITY **GOLD** DISCOVERY

CORPORATE PRESENTATION

**MARCH 2024**

[koboresources.com](http://koboresources.com) TSX.V: **KRI**

# Disclaimers

## Forward-Looking Statements

This presentation contains forward-looking statements and forward-looking information (collectively, “forward-looking statements”) within the meaning of applicable Canadian and US securities legislation. These statements relate to future events or the future activities or performance of the Company. All statements, other than statements of historical fact are forward-looking statements. Forward-looking statements are typically identified by words such as: believe, expect, anticipate, intend, estimate, postulate and similar expressions, or which by their nature refer to future events.

Although the Company believes that such statements are reasonable, it can give no assurance that such expectations will prove to be correct. Inherent in forward looking statements are risks and uncertainties beyond the Company's control, such as the Company's inability to obtain any necessary permits, consents or authorizations required for its activities, to produce minerals from its properties successfully or profitably, to continue its projected growth or to raise the necessary capital.

The Company cautions investors that any forward-looking statements by the Company are not guarantees of future performance, and that actual results are likely to differ, and may differ materially, from those expressed or implied by forward looking statements contained in this presentation.

These forward-looking statements are made as of the date hereof and the Company does not intend and does not assume any obligation, to update these forward-looking statements, except as required by applicable law. For the reasons set forth above, investors should not attribute undue certainty to or place undue reliance on forward-looking statements. For further reference, please refer to the “Risk Factors” identified in company documents filed on [www.sedar.com](http://www.sedar.com)

## Cautionary Statement

Investors are cautioned that Kobo is subject to the following risk factors associated with operating in Côte d'Ivoire as disclosed in the Prospectus: Following instability in recent years in several sub-Saharan countries, the prevailing security environment in the region has deteriorated due to the presence of various militant secessionist and Islamist paramilitary groups. While Kobo has implemented additional measures in response to ensure the security of its various assets, personnel and contractors, and continues to cooperate with regional governments, their security forces and third parties, there can be no assurance that these measures will be successful. Any failure to maintain the security of its assets, personnel and contractors may have a material adverse effect on Kobo business, prospects, financial condition and results of operations. Other risks and uncertainties include, but are not limited to, terrorism; hostage taking; military repression; extreme fluctuations in currency exchange rates; high rates of inflation; labour unrest; war or civil unrest; expropriation and nationalization; renegotiation or nullification of existing concessions, licenses, permits, contracts and fiscal stability arrangements; illegal mining; changes in taxation policies; restrictions on foreign exchange and repatriation; loss due to disease and other potential endemic health issues; and changing political conditions, currency controls and governmental regulations that favour or require the awarding of contracts to local contractors or require foreign contractors to employ citizens of, or purchase supplies from, a particular jurisdiction. There can be no assurance that such problems will not arise in the future. In particular, there has been a rise in incidents of terrorism and hostage taking in recent years. Although there is no reason to believe that Kobo's employees or operations are targeted, terrorist and other criminal activities in the region may disrupt our operations, limit our ability to hire and keep qualified personnel as well as restrict our access to capital.

## Qualified Person

Paul Sarjeant, PGeo., is the Qualified Person under National Instrument 43-101 Standards of Disclosure for Mineral Projects and has reviewed the technical material in this presentation. He is President & COO and a Director of Kobo Resources Inc.



# Kossou Gold Project:

Advancing exploration efforts on a **compelling new gold discovery** in West Africa following the first ever drill program in 2023.



# Kobo Resources Overview

Focused on near-term value creation through high-quality **gold** discovery

**KOBO**  
RESOURCES

TSX.V: KRI



## Highly-Experienced Management Team with In-Country Expertise

- Kobo is led by a highly experienced management team with strong in-country expertise as well as decades of experience in mineral exploration and development, mine site exposure and capital markets



## New Gold Exploration & Development Company with a Portfolio of Highly Prospective Gold Properties

- The 100%-owned Kossou Gold Project ("Kossou") with large, significant Au soil anomalies, multiple high grade surface showings



## Multiple Shear Zones with Gold Mineralization Identified by First Drill Program

- ~6,000 m reverse circulation ("RC") drilling completed on the Jagger Zone, Road Cut Zone and Contact Zone
- Significant gold mineralisation at Road Cut Zone, Jagger Zone and Kadie Zones



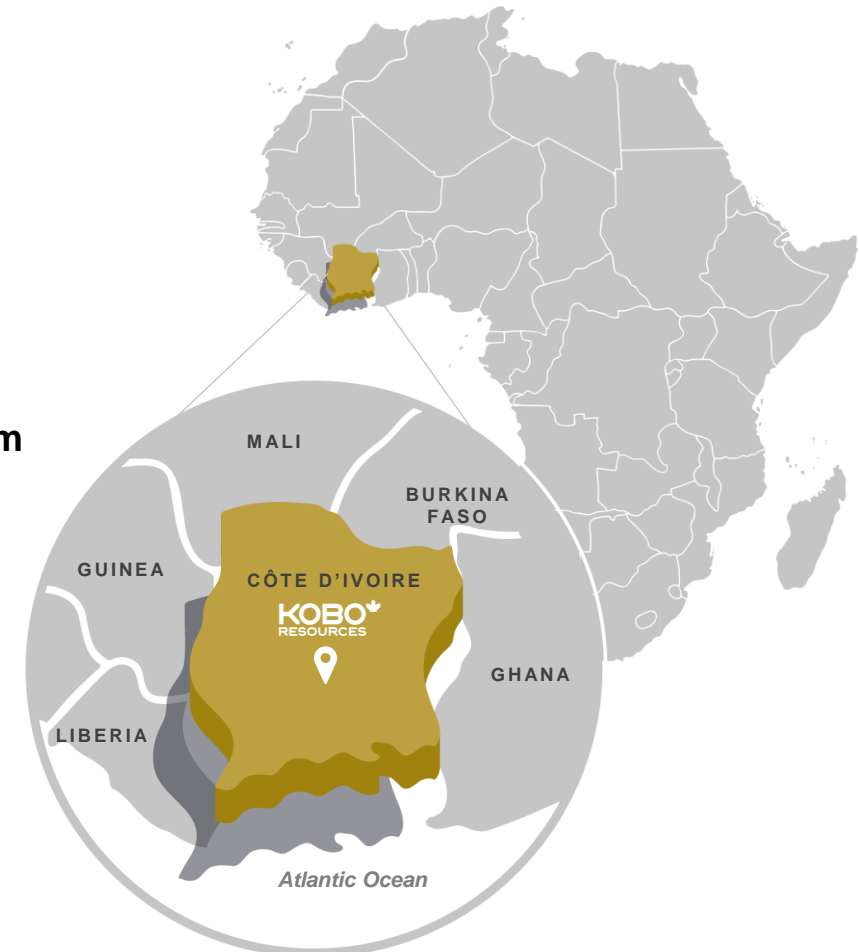
## Proximity to Nearby Operator with Similar Gold Mineralisation

- Kossou is located 6 km from the Yaouré mine owned and operated by Perseus Mining Inc. (M&I 2.8 Moz at 1.59 g/t Au and P&P of 2.07 Moz at 1.73 g/t Au<sup>1</sup>)



## Mining Friendly Jurisdiction with Untapped Potential

- Production from Ghana, Mali, Burkina Faso and Guinea has totaled over 119 Moz of gold from 2011 to 2021, dominantly from Birimian Group rocks, whereas Côte d'Ivoire has only produced 9.5 Moz in the same period



1. <https://perseusmining.com/resources-reserves/>

# Kossou Gold Project: Discovery Timeline



**2015**

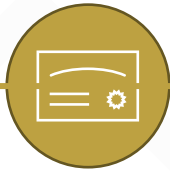
Awarded first two semi-industrial mining licenses for gold



**2016**

Initial discovery:  
**Road Cut Zone**

- Unique discovery located directly adjacent to operating Perseus Yaouré Mine
- Intersected well mineralised chip-channel samples averaging **18.20 m at 4.64 g/t Au**



**2019**

Kossou Gold Project research permit awarded



**2020**

Airborne geophysical surveys conducted and initial trench program planning



**2021**

**Jagger Zone discovery:**

- Trench intercepts grading **4.55 m at 3.72 g/t Au** and **6.20 m at 5.36 g/t Au** associated with well-defined zones of shearing with brecciated quartz veins



**Q1**

- RTO process completed, raising \$4.8 million and lists on TSX Venture Exchange under the symbol KRI



**Q2**

- Significant trench results at Jagger, **29 m at 6.42 g/t Au**, including **5 m at 18.04 g/t Au**



**2023**

**Q3**

*Initiates maiden drill program*

- Significant gold mineralisation intersected at Jagger Zone: **19 m at 2.03 g/t Au** and **20 m at 1.87 g/t Au**
- Strong gold mineralisation intersected over 850 m strike extent at the Road Cut Zone including **13 m at 2.10 g/t Au** and **8 m at 3.18 g/t Au**

*Initial drill phase completed; 53 holes (5,887 m)*



**Q4**

*Additional trench work completed*

- Road Cut Zone: **33 m at 4.68 g/t Au**
- Kadie Zone: **11 m at 5.16 g/t Au**
- Jagger Zone: **68 m at 1.38 g/t, incl. 11 m at 6.81 g/t**



**Q1 2024**

**~5,000 m diamond drill program** to expand known zones of mineralization and drill new targets at Kossou

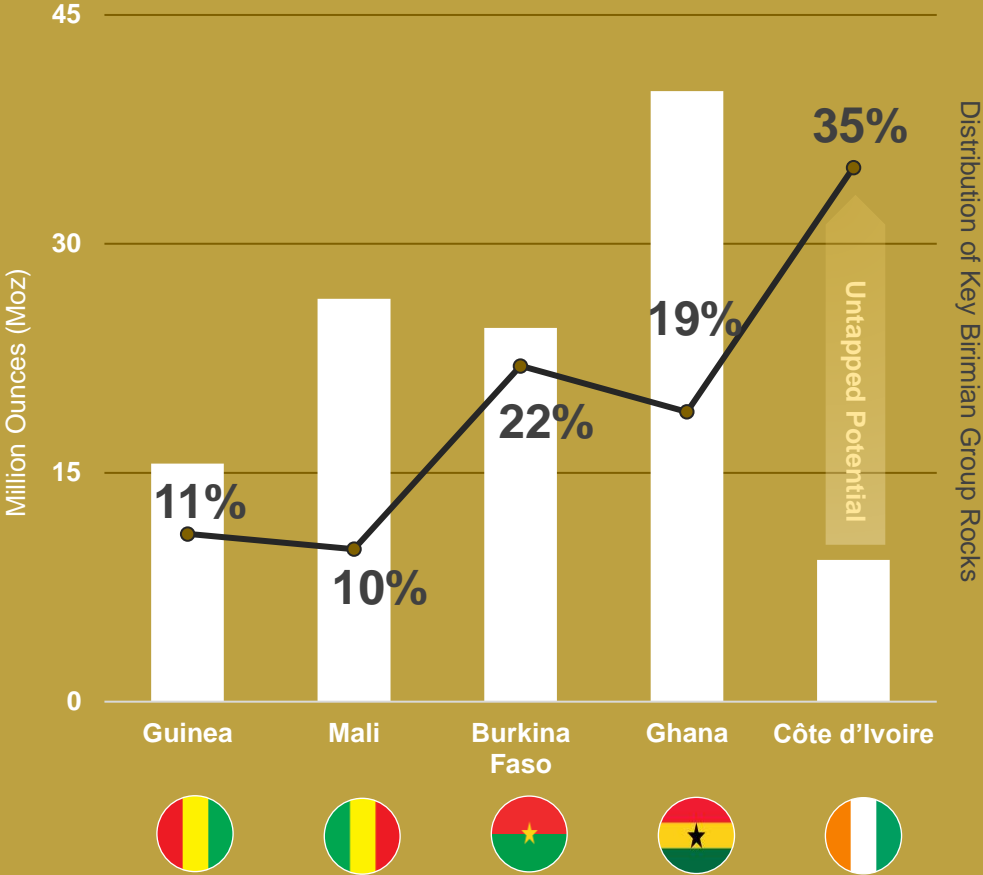
# Exploration in a Jurisdiction with **Untapped Potential**

Côte d'Ivoire counts for approximately 35% of the Birimian Group exposure in West Africa

## Birimian and Tarkwaian Group Rocks



## West African Gold Production<sup>1</sup> 2013 – 2022



1. World Gold Council 2022: Gold Mining Production Volume Data

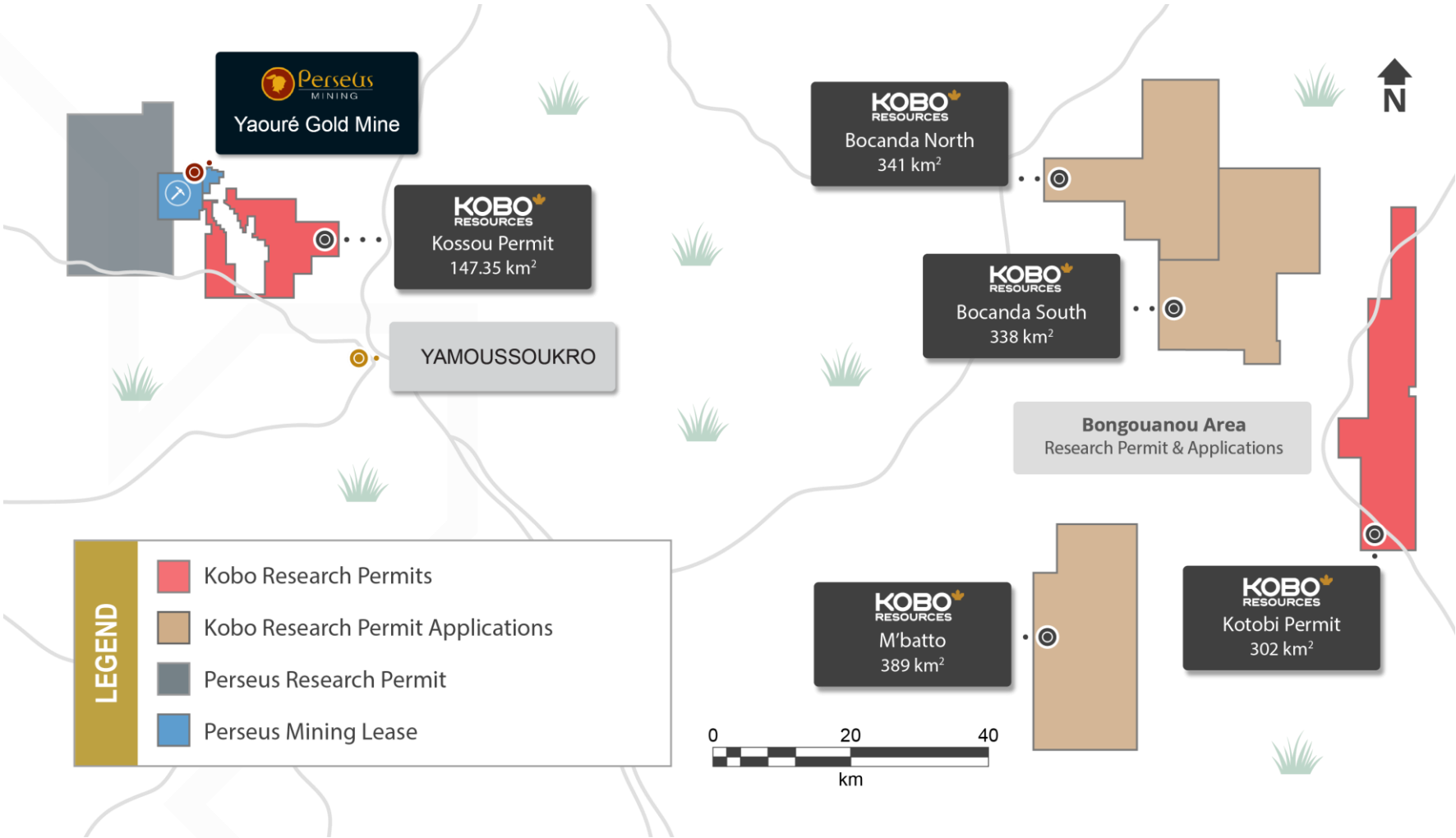
# Pathway to Future Discovery

Sizeable land positions with drill-ready targets

TARGET

DISCOVER

ADVANCE



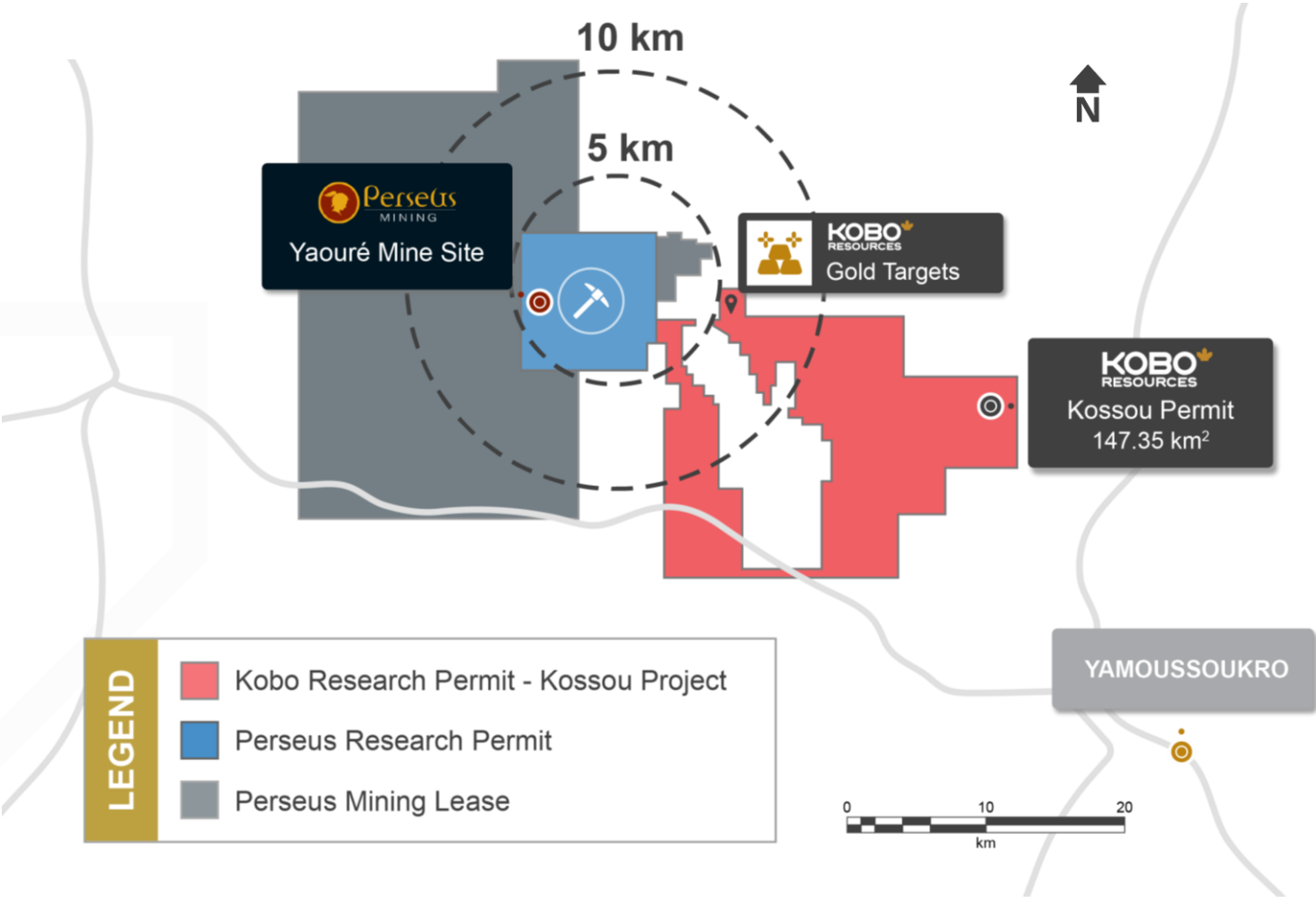
# Proximity to Nearby Gold Operator

A geological setting with advantages generally not accessible to other exploration opportunities

## Kossou Gold Project: Our Near-Term Focus

|                 |                                                                 |
|-----------------|-----------------------------------------------------------------|
| Location:       | Yamoussoukro, Côte d'Ivoire                                     |
| Ownership:      | 100% <i>(No royalties on project or property)</i>               |
| Mineral:        | Gold                                                            |
| Infrastructure: | Well-established roads, water, and power access, skilled labour |

- Over 9 km of geochemical anomalies to be explored at Kossou
- Kossou is located directly adjacent to the Yaouré Gold Mine operated by Perseus Mining Inc.
- Geological and structural controls, along with alteration styles present at the Yaouré Gold Mine are interpreted to occur within the Kossou Permit
- District well known for its general infrastructure and artisanal/commercial scale gold production





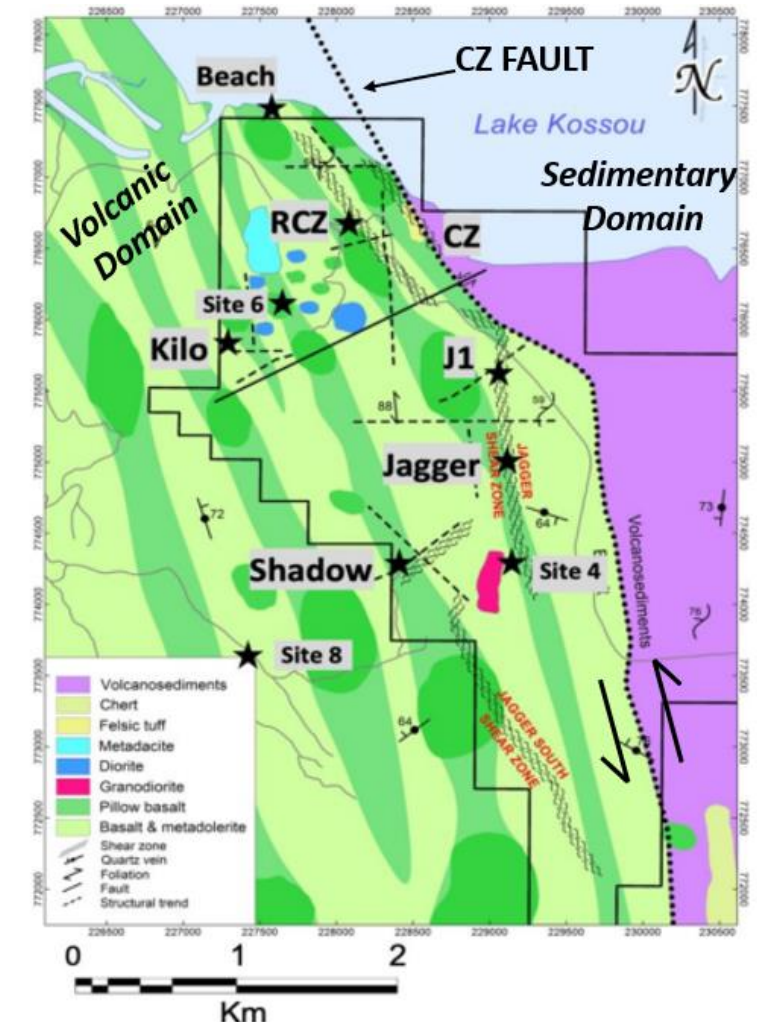
# Simplified Geology of Kossou

Similar geological and structural setting as the Yaouré Gold Mine

“ The presence of both disseminated and vein hosted gold mineralisation from initial petrology work indicates **the potential for similar mineralisation as to what is found at the adjacent Yaouré deposit.** ”

NI 43-101 Technical Report, Update of the Kossou Gold Project, Yamoussoukro District, Cote d'Ivoire, Kangari Consulting, 2022

- ✓ Lies within the Bouaflé greenstone belt
- ✓ Assemblage of Paleoproterozoic rocks of the Birimian Group
- ✓ Locally, mafic and pillowed volcanics with intercalated sediments in fault contact to the east with sedimentary basin
- ✓ Mineralisation occurs along a +300 m wide and +3 km long NNW structural corridor
- ✓ Sheared contact between volcanic package and volcano-sediments (CZ Fault) represents a key major, deep seated structural discontinuity
- ✓ Pervasive hydrothermal alteration, quartz-carbonate-sericite
- ✓ Gold mineralization associated with broad zones of silicification and multigenerational gold bearing veins
- ✓ Multiple zones have been identified with significant gold values and visible gold



# Soil Geochemistry

The Kossou Gold Project contains over 9 km of geochemical anomalies to be explored

## Soil Sampling Program

✓ 4,860+ soil samples taken to date

**Beach – RCZ** ~1.6 km strike

**Jagger** ~1.8 km strike (up to +500 m width)

**Kadie** ~1 km strike

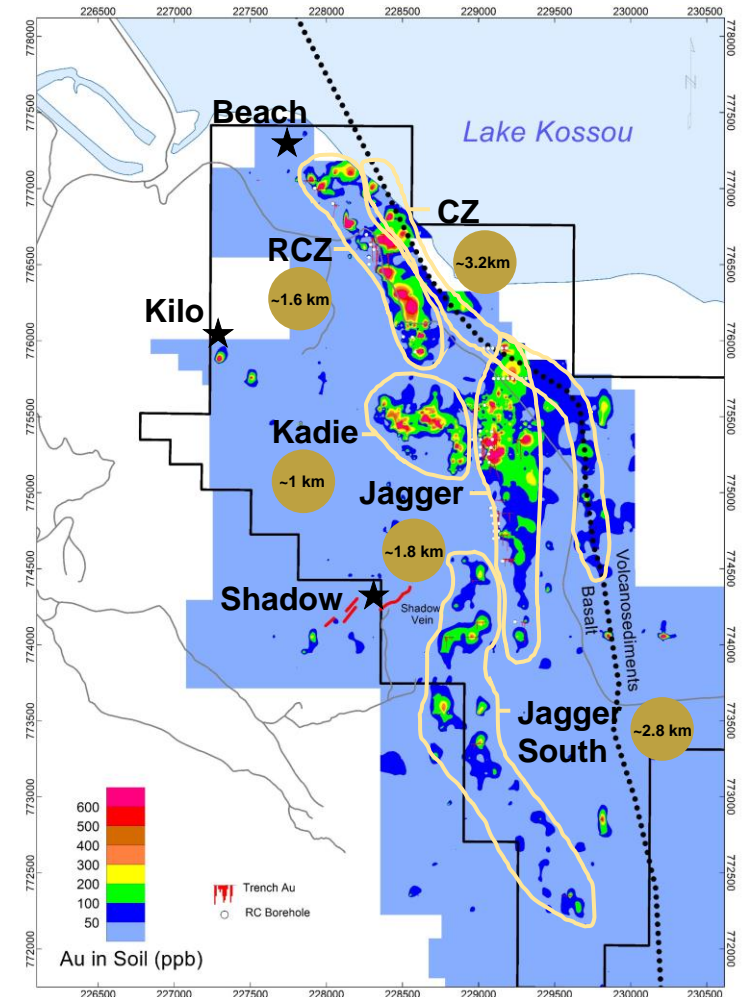
**CZ** ~3.2 km strike

“ This anomaly represents **excellent potential for the discovery of new gold zones.** ”

NI 43-101 Technical Report, Update of the Kossou Gold Project, Yamoussoukro District, Cote d'Ivoire, Kangari Consulting, 2022



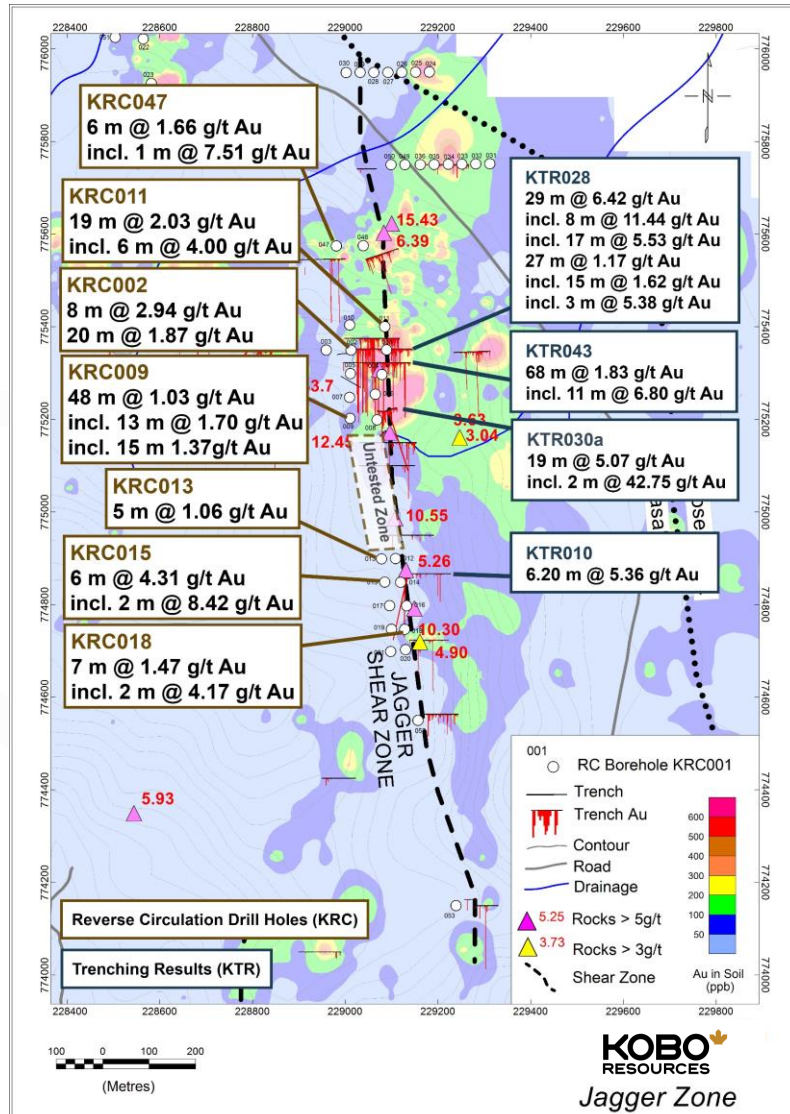
## Key Findings





# Over 1.4 km Strike extent at the Jagger Zone

Mineralisation intersected in every hole during initial drill program



- ✓ 25 RC drill holes (3,164 m), 34 trenches (2,594 m)
- ✓ Jagger continues to show **broad zones of gold mineralisation with higher grade sections** within a strong north-south shear zone
- ✓ High grade gold mineralization associated with N-S shear parallel brecciated veins and east-west to northwest trending quartz veins within silicified shear zones; **Brecciated vein material has been mapped over 700+ m strike length**
- ✓ 300 m untested zone south of KTR030 and KTR030a confirmed with trenching to host Jagger shear zone

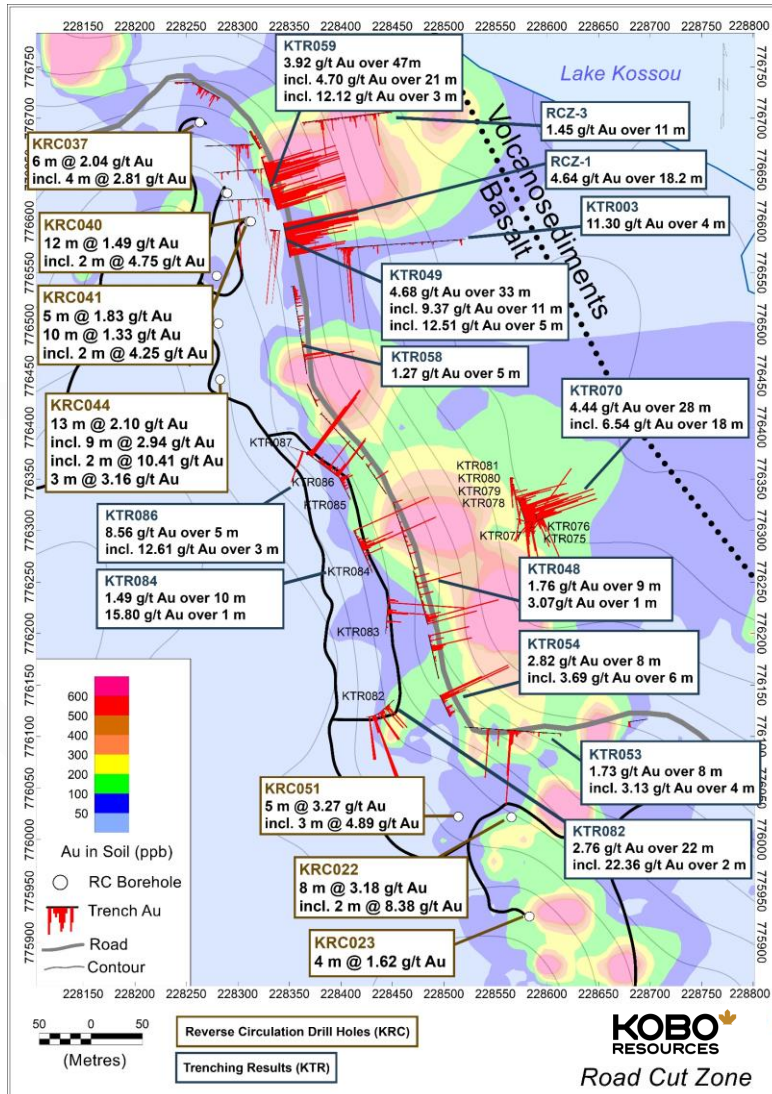
## Trench and Drill Result Highlights

- ✓ KTR028: 29 m at 6.42 g/t Au incl. 8 m at 11.44 g/t Au
- ✓ KTR043: 68 m at 1.83 g/t Au incl. 11 m at 6.80 g/t Au
- ✓ KTR030a: 19 m at 5.07 g/t Au incl. 2 m at 42.75 g/t Au
- ✓ KRC009: 48 m at 1.03 g/t Au incl. 13 m at 1.70 g/t Au
- ✓ KRC011: 19 m at 2.03 g/t Au incl. 6 m at 4.00 g/t Au

All intercepts reported are downhole distances and true width of mineralisation are unconfirmed at this time.

# Road Cut Zone Drilled Over a Strike of 850 m

Gold mineralisation has been confirmed in clearly defined zones during initial drill program



- ✓ Broad zones of gold mineralisation defined from **13 RC drill holes** (1,699 m) and **48 trenches** (1,745 m)
- ✓ Gold in soil geochemistry indicates that the **Road Cut Zone can be traced over a strike length of 1.7 km** and is a prime target for continued drilling
- ✓ 500 m gap between KRC041 and KRC051 is underlain by a strong gold soil geochemical anomaly that remains a primary drill target for the future
- ✓ Results from trench KTR070 demonstrate the potential of the Road Cut Zone anomaly

## Trench and Drill Result Highlights

- ✓ KTR059: 47 m at 3.92 g/t Au incl. 21 m at 4.70 g/t Au
- ✓ KTR049: 33 m at 4.68 g/t Au incl. 11 m at 9.37 g/t Au
- ✓ KTR070: 28 m at 4.44 g/t Au incl. 18 m at 6.54 g/t Au
- ✓ KRC044: 13 m at 2.10 g/t Au incl. 9 m at 2.94 g/t Au
- ✓ KRC022: 8 m at 3.18 g/t Au incl. 2 m at 8.38 g/t Au



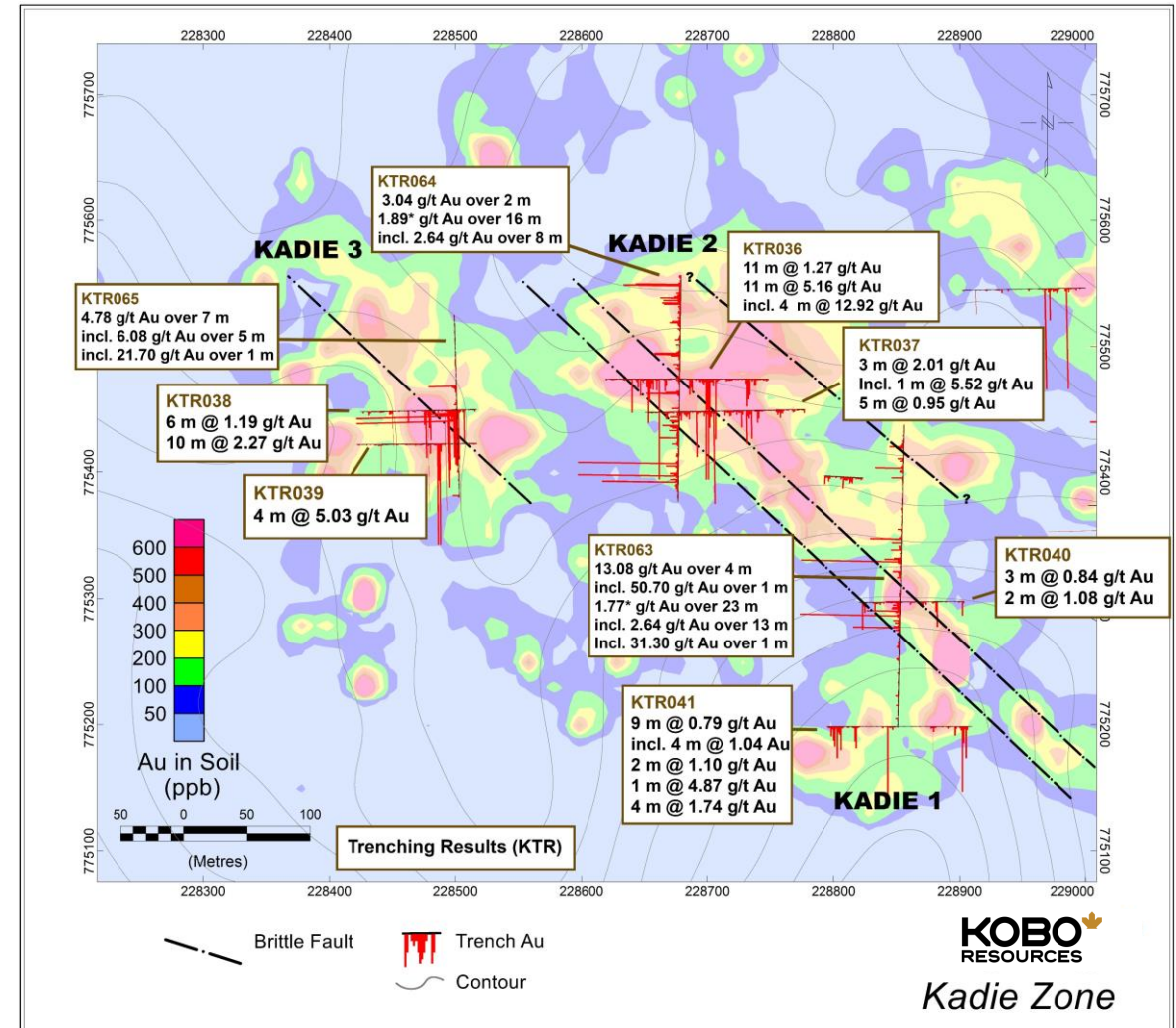
# Kadie Zone: Strong, Well-Defined Gold in Soil Anomalies

The prospective and undrilled Kadie Zone target has been elevated to drill-ready status

- ✓ **10 trenches** (1,275 m) and recent infill soil sampling has identified **three strong SE trending geochemical anomalies** totaling a +1 km strike length located just west of the main Jagger Zone named Kadie 1, Kadie 2, and Kadie 3
- ✓ The Kadie Zone targets have **structural and lithological characteristics similar to those found at the prospective Jagger gold bearing shear zone**
- ✓ **Highlighted Trench Results:**
  - ✓ **KTR036:** 11 m at 5.16 g/t Au incl. 4 m at 12.92 g/t Au (Kadie 2)
  - ✓ **KTR065:** 7 m at 4.78 g/t Au incl. 5 m at 6.08 g/t Au (Kadie 3)
  - ✓ **KTR063:** 4 m at 13.08 g/t Au incl. 1 m at 50.70 g/t Au (Kadie 2)



In total, the combined Kadie Zone soil anomalies extend approx. 1 km along strike



The true width of all mineralized intercepts are unconfirmed at this time.

# Exploration Program Overview

RC drilling with an immediate goal of defining significant near surface zones of gold mineralisation

## Trench / Channel Sample Program:

- ✓ **Jagger Zone:** 34 trenches / 2,594 m
- ✓ **Road Cut Zone:** 48 trenches / 1,745 m
- ✓ **Contact Zone:** 1 trenches / 100 m
- ✓ **Kadie Zone:** 10 trenches / 1,275 m

## Initial Drill Program:

- ✓ **Jagger Zone:** 3,164 m (25 holes)
- ✓ **Road Cut Zone:** 1,699 m (13 holes)
- ✓ **Contact Zone:** 1,024 m (15 holes)

Completed ✓

## Next Phase: March 2024

- ✓ ~5,000 m diamond drill program on the Jagger Zone, Road Cut Zone and Kadie Zone

### Jagger Zone

5-6 holes / ~1,200 m

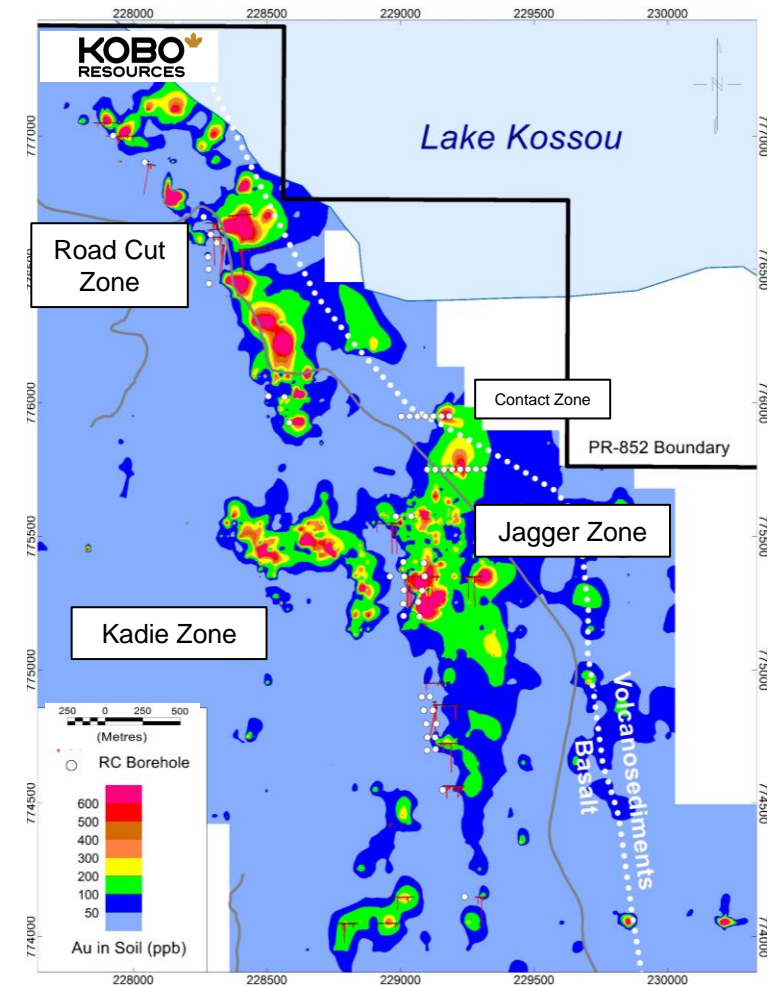
### Road Cut Zone

15-16 holes / ~2,400 m

### Kadie Zone

8-10 holes / ~1,400 m

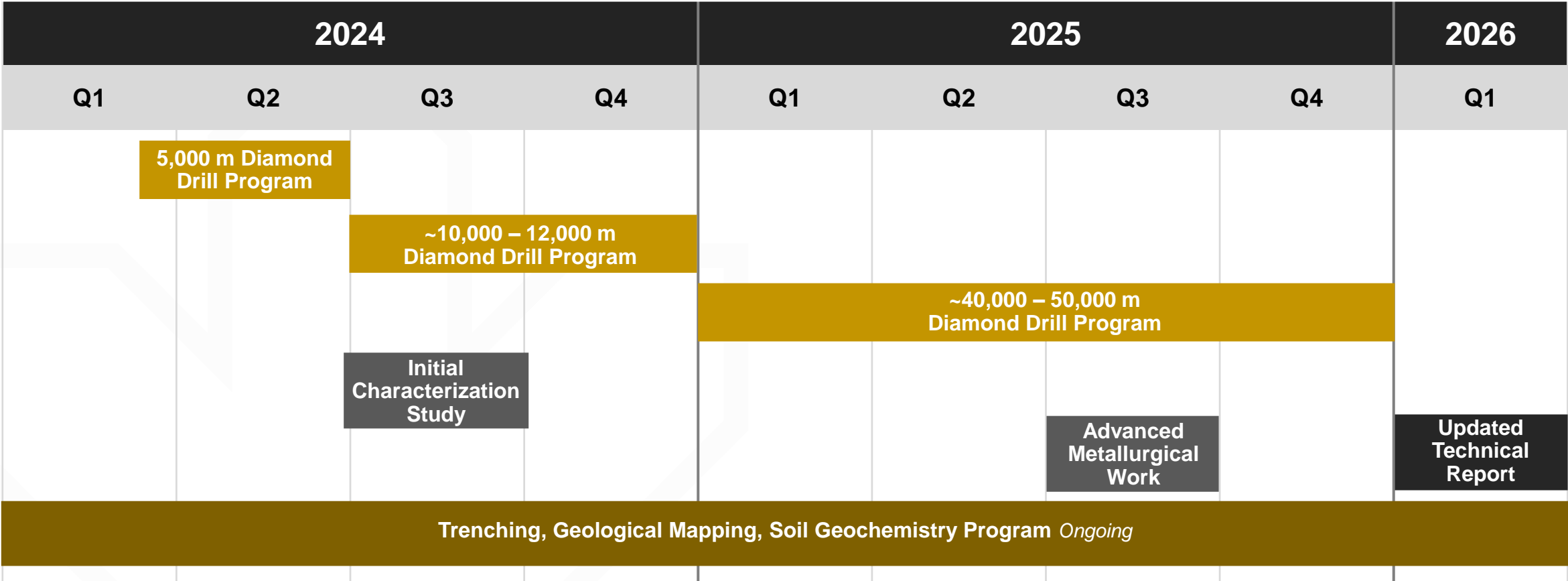
- The Company expects to continue drilling throughout the year to expand known zones of mineralization and further delineate key targets.
- The Company will continue its trenching, geological mapping and soil geochemistry programs going forward.






# Near-Term Catalysts: Timeline

Focused on advancing the Kossou Gold Project to drive and unlock future value





**Expected Drilling Cost**

C\$215 / m

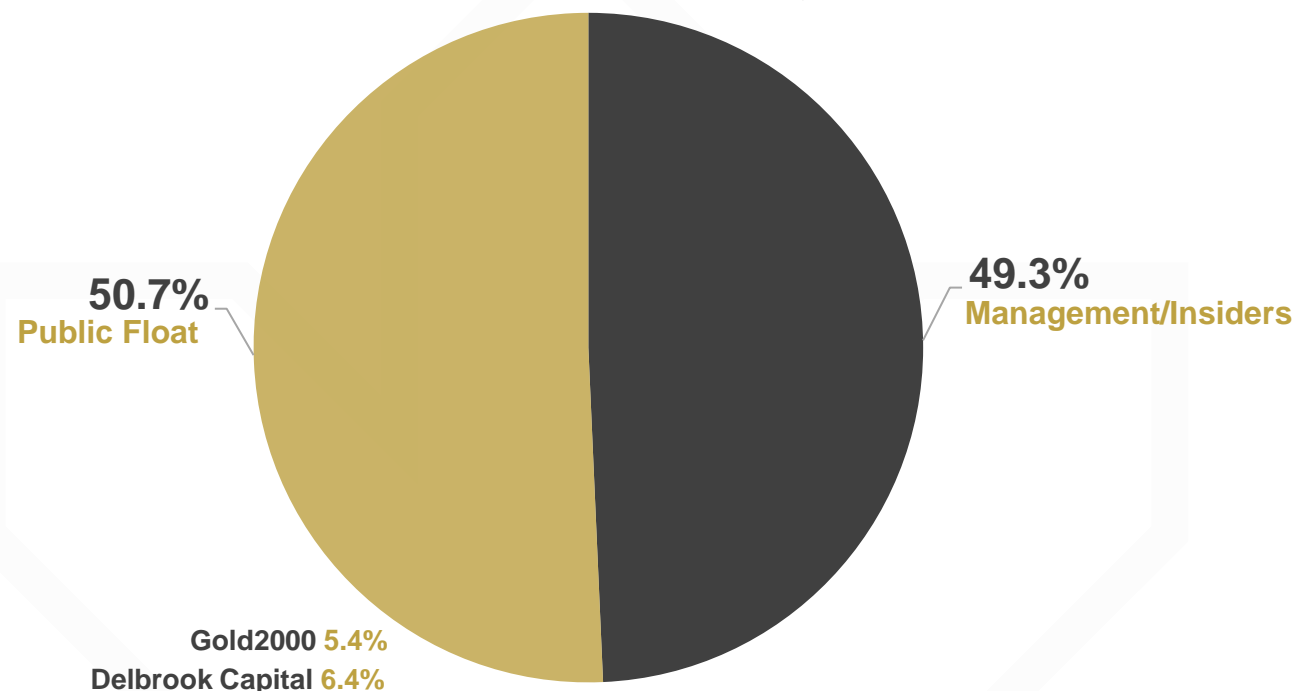
Cautionary Note: The estimated timeline provided above is intended for indicative purposes only. It reflects the Company's plans but is contingent upon various assumptions including that additional capital will be available as and when required. The estimated timeline is also subject to significant risks and uncertainties including the timing of completing the studies, geopolitical and economic risks, and fluctuation of gold prices. Refer to the cautionary statements and risks factors described in the Company's AIF.

# Capitalization Structure

As of FEBRUARY 2023

## Ownership Summary

(Current Issued and Outstanding)



### Recent Financing Rounds (2020 thru 2023)

~\$C7 million at an average price of C\$0.24 per share

## Capital Structure

|                         | Shares (M)  | % I/O | % Diluted |
|-------------------------|-------------|-------|-----------|
| Management and Insiders | 40.0        | 49.3  | 41.2      |
| Public                  | 41.2        | 50.7  | 42.4      |
| <b>Basic Shares O/S</b> | <b>81.2</b> |       |           |

|                                 |             |  |              |
|---------------------------------|-------------|--|--------------|
| Kobo - Options                  | 5.6         |  | 5.6          |
| Resulting Issuer Warrants       | 9.4         |  | 9.6          |
| Agent Warrants                  | 1.1         |  | 1.1          |
| <b>Fully Diluted Shares O/S</b> | <b>97.1</b> |  | <b>100.0</b> |

## Options & Warrants

|                                            | (M)           | Strike | Expiry    |
|--------------------------------------------|---------------|--------|-----------|
| Kobo - Options                             | 0.6           | \$0.15 | Dec-2024  |
| Kobo - Options                             | 1.1           | \$0.20 | Feb- 2025 |
| Kobo – Options                             | 1.5           | \$0.20 | Jan-2025  |
| Kobo – Options                             | 0.3           | \$0.20 | Mar-2028  |
| Kobo – Options                             | 2.1           | \$0.30 | Jun-2033  |
| Issuer Warrants                            | 9.4           | \$0.40 | Mar-2025  |
| Broker Warrants                            | 1.1           | \$0.40 | Mar-2025  |
| <b>Total</b>                               | <b>15.9</b>   |        |           |
| <b>Weighted Average Strike Price</b>       | <b>\$0.34</b> |        |           |
| <b>Potential Cash from Exercise (C\$M)</b> | <b>\$5.5</b>  |        |           |

# Management

A highly experienced management team with strong in-country expertise



**Edward Gosselin, L.L.L.**

**CEO & Founder**

- Member of the Quebec Bar Association since 1984
- Exercised in private practice for more than 18 years in commercial law, banking litigation, bankruptcy and insolvency, business restructuring, raising capital for 'Start-ups', director of numerous private entities
- Strategic advisor having acquired more than 20 years of experience in the management of high tech, industrial companies and exploration, focusing on Cote d'Ivoire project for the last 9 years



**Paul Sarjeant, P.Geo**

**President & COO**

- Professional Geologist with over 35 years of experience in mineral exploration, project management, development and evaluation throughout the world including Africa
- Extensive management experience having served as President & CEO for several small cap exploration and development companies
- Member of the Association of Professional Geoscientists of Ontario



**Chris Picken, MIMMM**

**Exploration Manager**

- Over 35 years' experience in mineral exploration and development as a geologist, Exploration Manager and Chief Operating Officer
- Has worked for several international major, mid-tier and junior exploration companies with a track record of discovery and development
- +10 years of exploring Archaean and Birimian gold terranes in West Africa, including as Geological Superintendent for the pre-feasibility and definitive feasibility study drill programs at the Yaoure Mine at from 2014 to 2018 for both Amara and Perseus Mining



**Carmelo Marelli, CPA, CA**

**Chief Financial Officer**

- Mr. Marrelli is the principal of the Marrelli Group, which includes several companies providing accounting, corporate secretarial, and regulatory compliance services to listed companies.
- He holds the Chartered Professional Accountant (CPA, CA, CGA) designation and is a member of the Institute of Chartered Secretaries and Administrators.
- Mr. Marrelli serves as the chief financial officer for multiple issuers on various stock exchanges and is a director of select issuers.



# Investment Recap

What to expect from **Kobo Resources**

**KOBO**  
RESOURCES

TSX.V: KRI



Newly Listed Gold Exploration and Development Company with a Portfolio of **Highly Prospective Gold Properties & Targets**



**Multiple Shear Zones with Gold Mineralization Identified by Initial Exploration Efforts**



Well Established & Mining-Friendly Jurisdiction with **Close Proximity To Nearby Gold Operator**



**Experienced Team** with Exploration, Mine Development and Capital Markets Experience





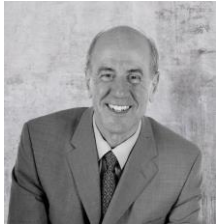
# Appendices





# Board of Directors

Extensive experience across all facets of the mining industry



## Frank Ricciuti

### Chairman & Director

- Has served as senior executive of two major international resources companies and as a director of in excess of 20 companies, including both a number of publicly traded and private Quebec based companies
- Served for a number of years as senior executive with two major Investment Banking firms
- Has extensive international experience within the mining industry and has been directly involved in the raising of considerable amounts of equity capital



## Patrick Gagnon

### Director

- Former managing partner of GMP Securities - Montreal Branch
- Former President of Palos Wealth Management in Montreal
- Retired, but still active in the markets



## Edward Gosselin, L.L.L.

### Director

- Member of the Quebec Bar Association since 1984
- Exercised in private practice for more than 18 years in commercial law, banking litigation, bankruptcy and insolvency, business restructuring, raising capital for 'Start-ups', director of numerous private entities
- Strategic advisor having acquired more than 20 years of experience in the management of high tech, industrial companies and exploration, focusing on Cote d'Ivoire project for the last 9 years



## Jeff Hussey, P. Geo.

### Director

- President and COO of Osisko Metals
- Professional Geologist with more than 35 years of mining and mineral exploration including 20 years in open pit and underground mining operations for Noranda & Falconbridge, including the Brunswick No. 12 Mine, Gaspé Copper Mines, the Antamina Copper-Zinc Mine in Peru, and Raglan Nickel-Copper Mines in Northern Québec
- Consultant for numerous projects on behalf of junior exploration and development companies while fulfilling corporate executive roles for clients including Champion Iron Mines



## Brian Scott, P. Geo.

### Director

- Professional Geologist with 35+ years of experience in exploration and mine development globally, covering diverse deposit types and political landscapes.
- During his 30-year career with Bema Gold Corp. (acquired by Kinross Gold) and B2Gold Corp., Mr. Scott played a pivotal role in the success of both companies, contributing to all aspects of exploration, development, and mining.
- Mr. Scott retired from B2Gold Corp. at the end of 2023 where he served as VP Geology and Technical Services from 2015 to 2023.
- Bachelor of Science (Honours) degree in Geology from Lakehead University in Ontario.



## Paul Sarjeant, P. Geo.

### Director

- Professional Geologist with over 35 years of experience in mineral exploration, project management, development and evaluation throughout the world including Africa
- Extensive management experience having served as President & CEO for several small cap exploration and development companies
- Member of the Association of Professional Geoscientists of Ontario



# Advisors



## **Marc-Antoine Audet, MSc, PhD**

### **Technical Advisor**

- +35 years of exploration and development experience in West Africa
- Currently is CEO Sama Resources which is developing the Samaplué NI-Cu project in Côte d'Ivoire
- Previously served as Senior Project Geologist and Director of Operations for Falconbridge International in Côte d'Ivoire



## **Roger N'Guessan, PhD**

### **Advisor**

- Received a Ph.D. in Civil Engineering, specializing in Energy and Sustainable Development from Ecole Centrale des Arts et Manufactures de Paris in 1990 and has accumulated over 25 years of international experience in the development of energy management, environmental protection and sustainable development in both the private and public sector
- Key consultant to the African Development Bank, World Bank, various United Nations agencies and the Canadian International Development Agency and former Director of the Ministry of Environment and Forests
- Deputy Director of Higher Education and Scientific Research with the Côte d'Ivoire government



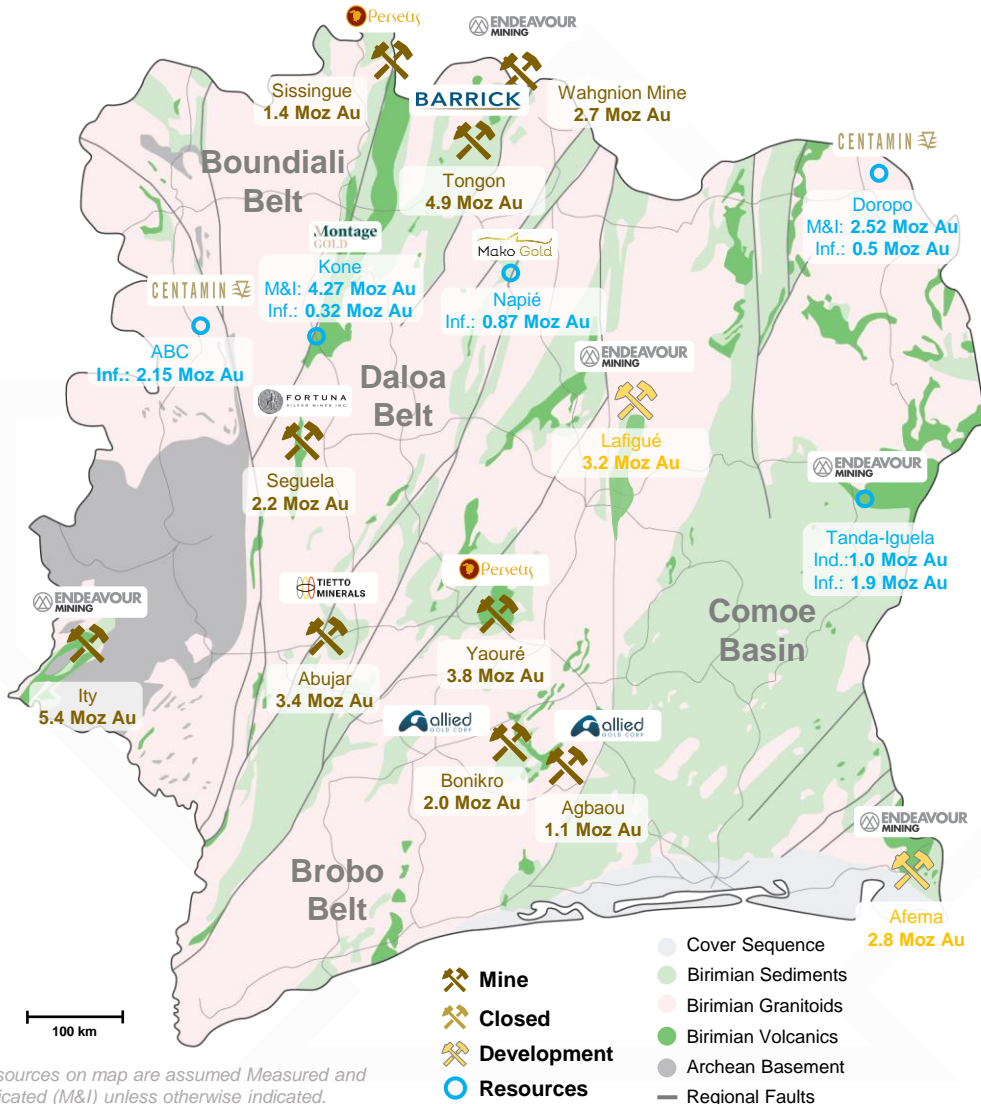
## **Pierre Boivin**

### **Policy Advisor, Africa**

- Pierre is a Lawyer at McCarthy Tétrault and Member of the Quebec Bar Association since 1981, having a diversified practice focused on mergers and acquisitions, private equity and related commercial matters across several industries, most notably mining, oil and gas and energy on both a domestic and international scale

# Côte d'Ivoire: Operating Mines and Discoveries

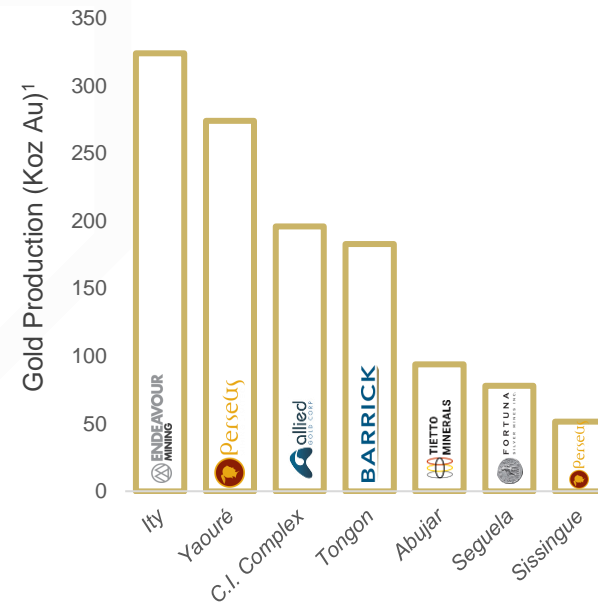
A mining friendly jurisdiction with a significant presences of majors



## Numerous billion-dollar buyouts involving gold mines located in Côte d'Ivoire in recent years:

- Endeavour purchased SEMAFO for C\$1 billion and Teranga Gold for C\$2.4 billion
- Fortuna Silver bought Roxgold for C\$1 billion

### Major Active Mines<sup>2</sup>



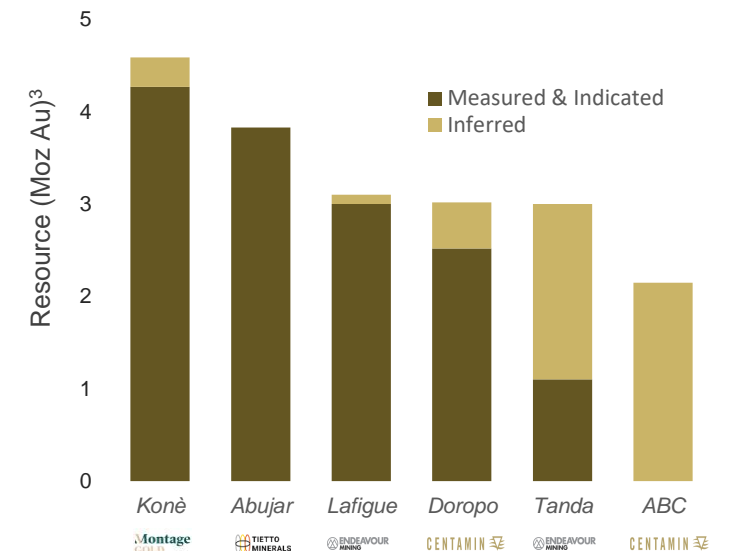
Source: Capital IQ, Company Filings

1. Fiscal year 2020 production figures.

2. Company filings (2022, 2023).

3. Measured, Indicated and Inferred Resources: [www.centamin.com](http://www.centamin.com), [www.montagegoldcorp.com](http://www.montagegoldcorp.com), [www.tietto.com](http://www.tietto.com), [www.endeavourmining.com](http://www.endeavourmining.com)

### Advanced Projects & Major Discoveries



# Côte d'Ivoire: Overview

Government's objective is for natural resources development to become the No. 2 economic engine for the country<sup>6</sup>

## Country Overview

- ☑ One of the **largest economies** in West Africa, after Nigeria and Ghana, with a relatively high GDP per capita for the region
- ☑ **Stable political** environment with a presidential republic and civil law system based on French civil code
- ☑ Fast **growing economy** with annual GDP growth over 6.0% per year in 2018 and 2019, slowing down to 1.8% in 2020 due to the pandemic, rebounding to 7.0% in 2021 and 6.7% in 2022<sup>2</sup>.
- ☑ **Mining sector has potential to lead this growth**
- ☑ 1985 **Tax Treaty** with Canada; 2013 FIPA (Foreign Investment Protection Agreement between both Countries)
- ☑ **New Mining Code** (2014) which is favourable to gold exploration and resource development



## Major Mining Companies in Côte d'Ivoire:

**BARRICK**

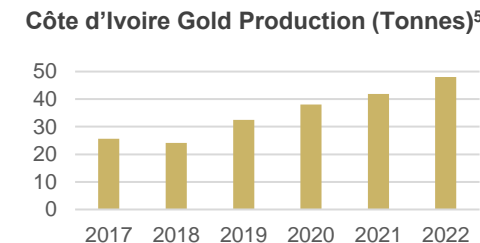
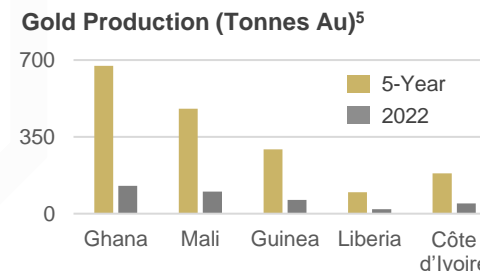


**CENTAMIN**



## Gold Development & Mining in Côte d'Ivoire

- **West Africa** has seen significant development of **gold resources** in the past +25 year, with **over 2,091 tonnes** produced in the past 5 years alone<sup>5</sup>
- Côte d'Ivoire has lagged the rest of West Africa until recent years producing only 162 tonnes in the past 5 years<sup>5</sup>
- Many new discoveries have been made in recent years feeding into the strong interest of Junior, Intermediate and Senior explorers/producers
- We see exceptional opportunity in Côte d'Ivoire in the near future



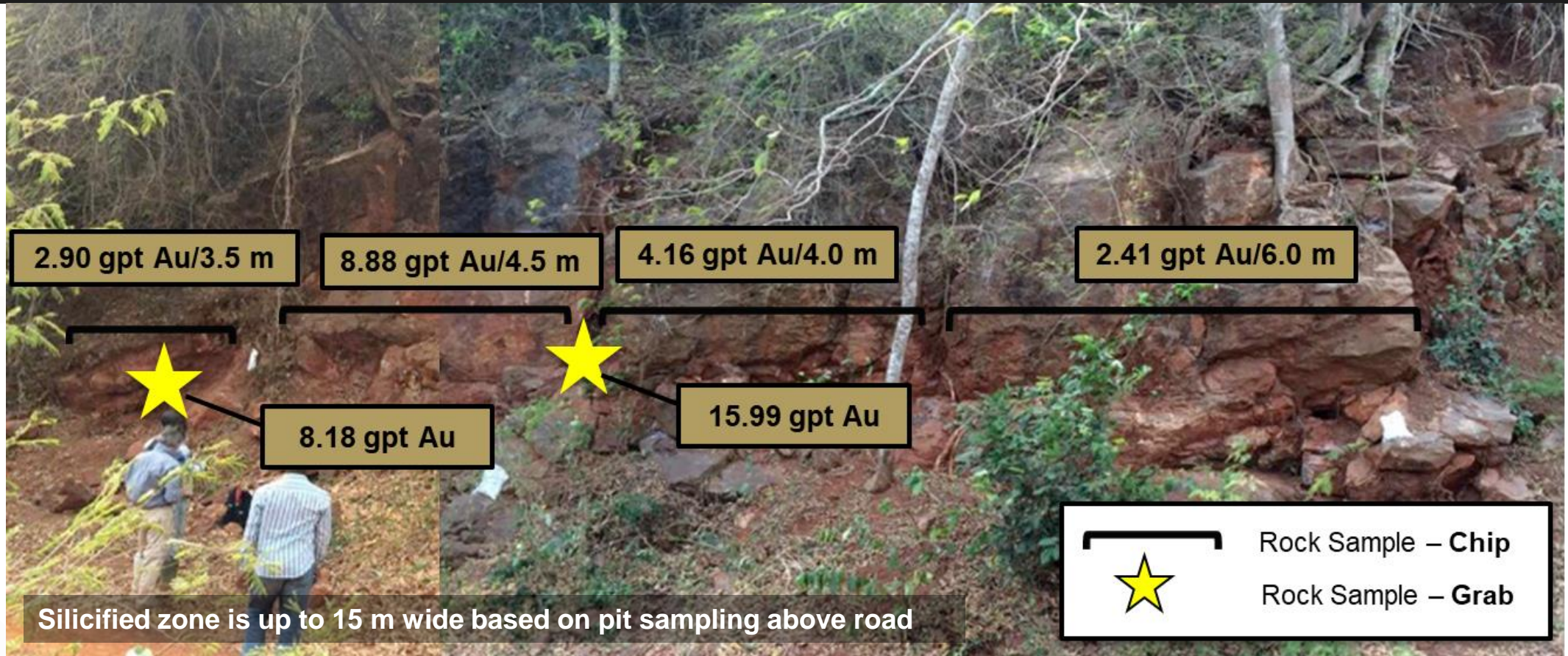
## Country Statistics

|                       |                                       |
|-----------------------|---------------------------------------|
| <b>Population</b>     | 28.7 M (2022 est) <sup>1</sup>        |
| <b>Capital City</b>   | Yamoussoukro (pop 361,893)            |
| <b>Largest City</b>   | Abidjan (pop 5.7m) <sup>1</sup>       |
| <b>Major Language</b> | French, indigenous languages          |
| <b>GDP</b>            | US\$70.05 B in 2022 <sup>2</sup>      |
| <b>GDP per Capita</b> | US\$2,272 in 2022 <sup>2</sup>        |
| <b>GDP Growth</b>     | Est. 7.2% growth in 2023 <sup>2</sup> |
| <b>Currency</b>       | CFA Franc US\$1=610 CFA <sup>4</sup>  |



# Road Cut Zone

Initial discovery of gold mineralization along the Road Cut Zone (“RCZ”)



**Overall grades 4.64 g/t Au over 18.2 m of rock exposure**

(Samples 01-05-16-09 to 16-12 and S2)

# Target Rich Environment

Multiple gold occurrences identified with 15% of project explored to date

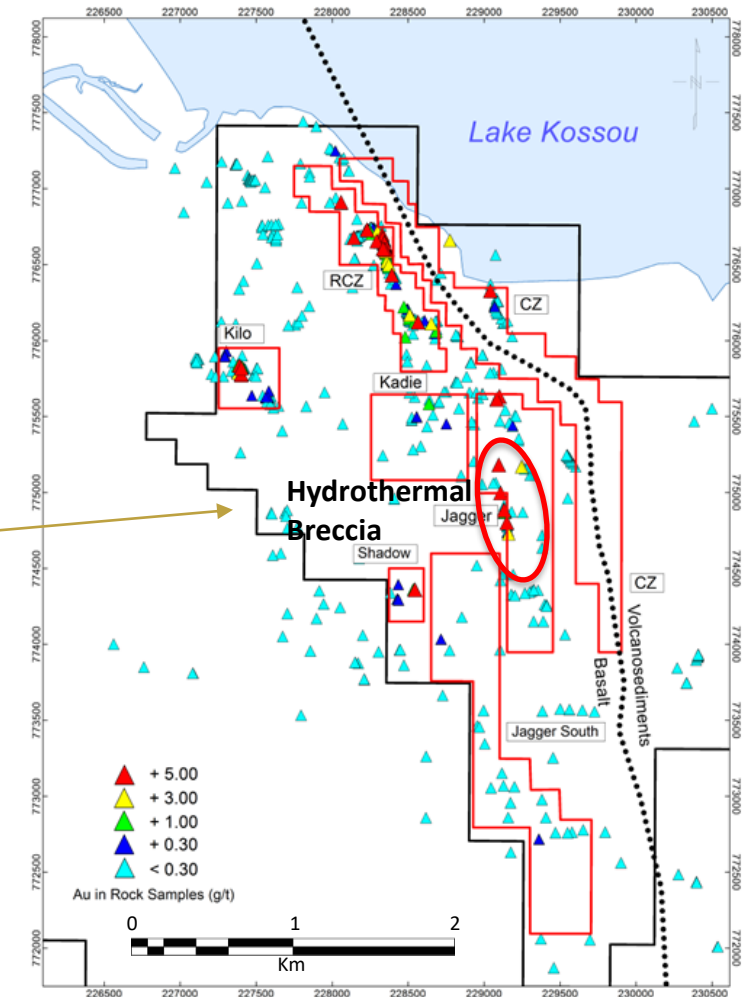
## Rock Sampling Program

- ✓ 1,106 total samples:
  - ✓ **+1 g/t Au** – 152 samples
  - ✓ **+5 g/t Au** - 49 samples
  - ✓ **+10 g/t Au** - 16 samples
- ✓ RCZ – up to **16.61 g/t Au**
- ✓ Jagger– up to **43.7 g/t Au**
- ✓ Kadie – up to **7.42 g/t Au**
- ✓ Kilo – up to **13.25 g/t Au**



The Jagger target is a strong shear/breccia zone traced in trenching and outcrop over a distance of 1,000 m along strike. Results to date of rock chip sampling up to **10 g/t** with **4.9 g/t Au over 4.30 m** and **10.3 g/t Au over 3.5 m**.

Trenching and rock sampling is in progress to help define drill targeting.



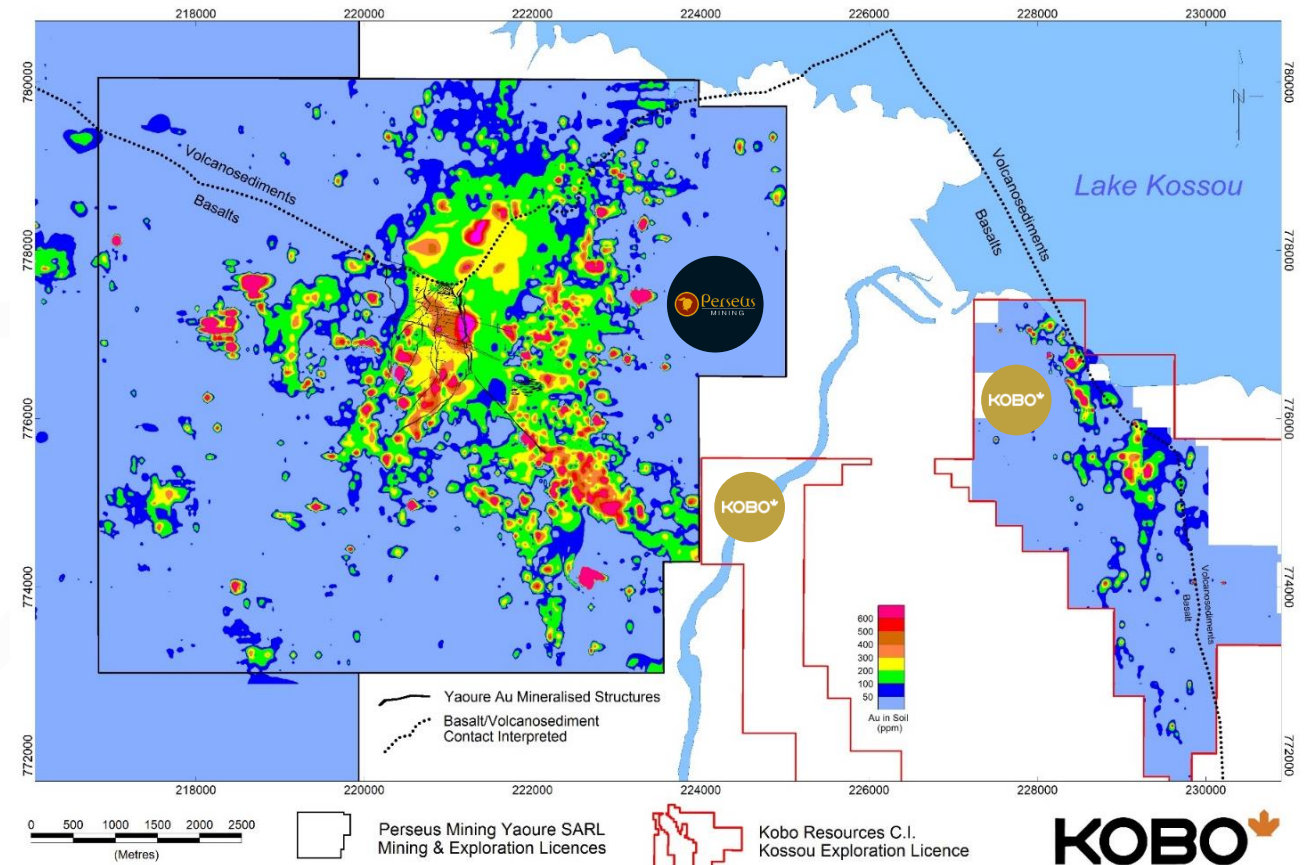


# Importance of Structure and Geology

Geological similarities between the **Kossou Gold Project** and the Yaouré Gold Mine

## Regional Context

- ✓ Kossou remains the largest gold geochemical anomaly the region that has not been fully explored
- ✓ Sediment-Volcanic contact critical at the Yaouré Gold Mine
- ✓ Key North-South structure emanates from contact
- ✓ Similar associations appear present at Kossou
- ✓ Strongest geochemical anomalies proximal to volcanic/sediment contact
- ✓ Well defined shape of Kossou anomalies function of shallower weather profile



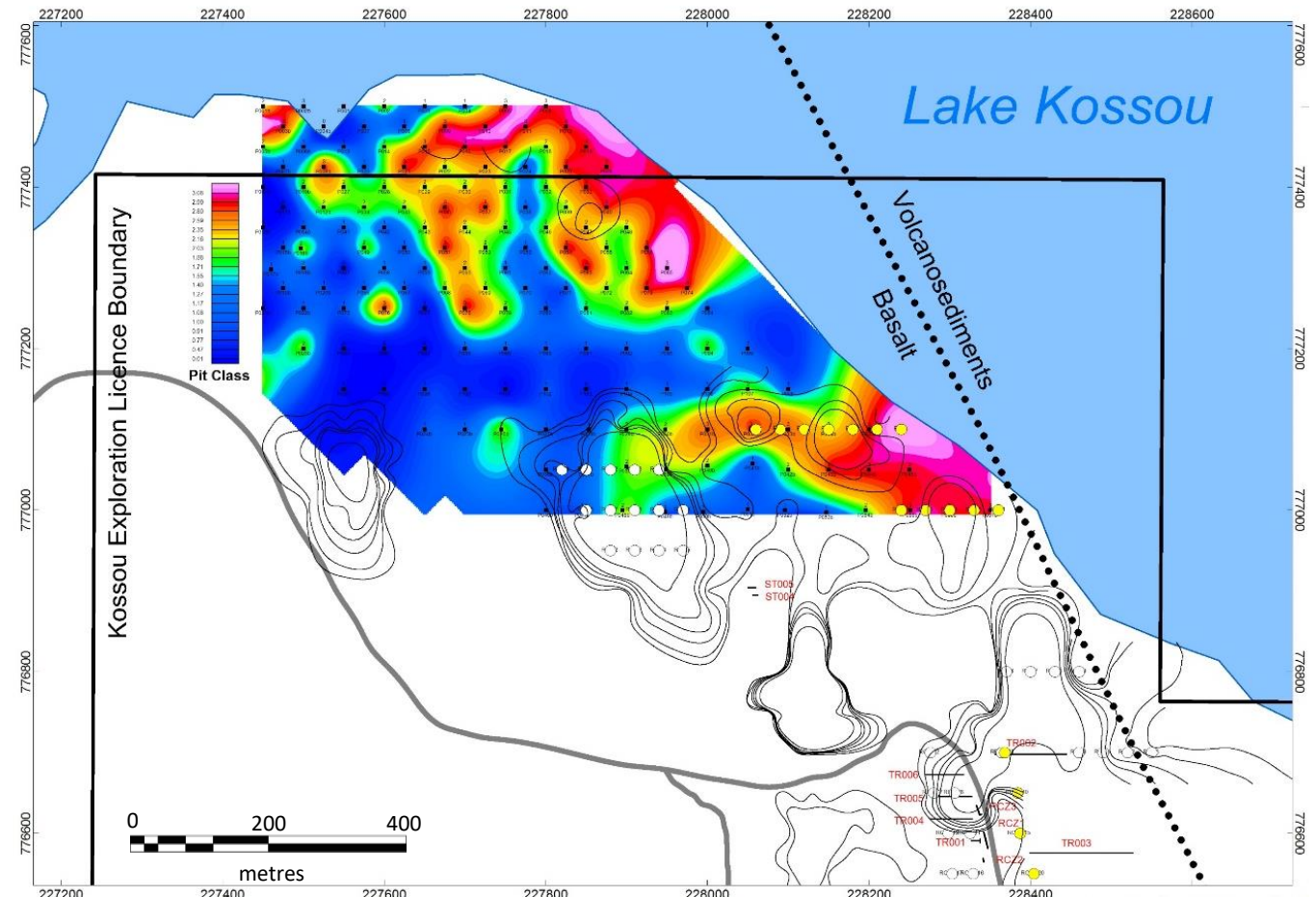
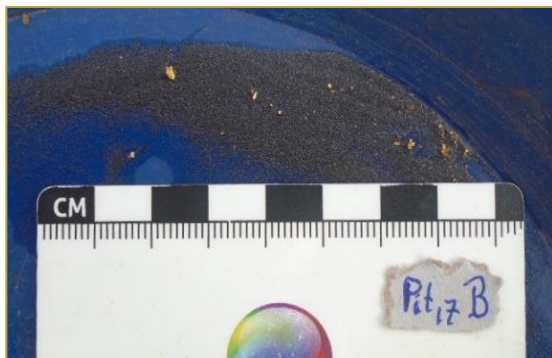


# Beach Zone

Kobo's initial gold discovery at the Kossou Gold Project

## Beach Zone

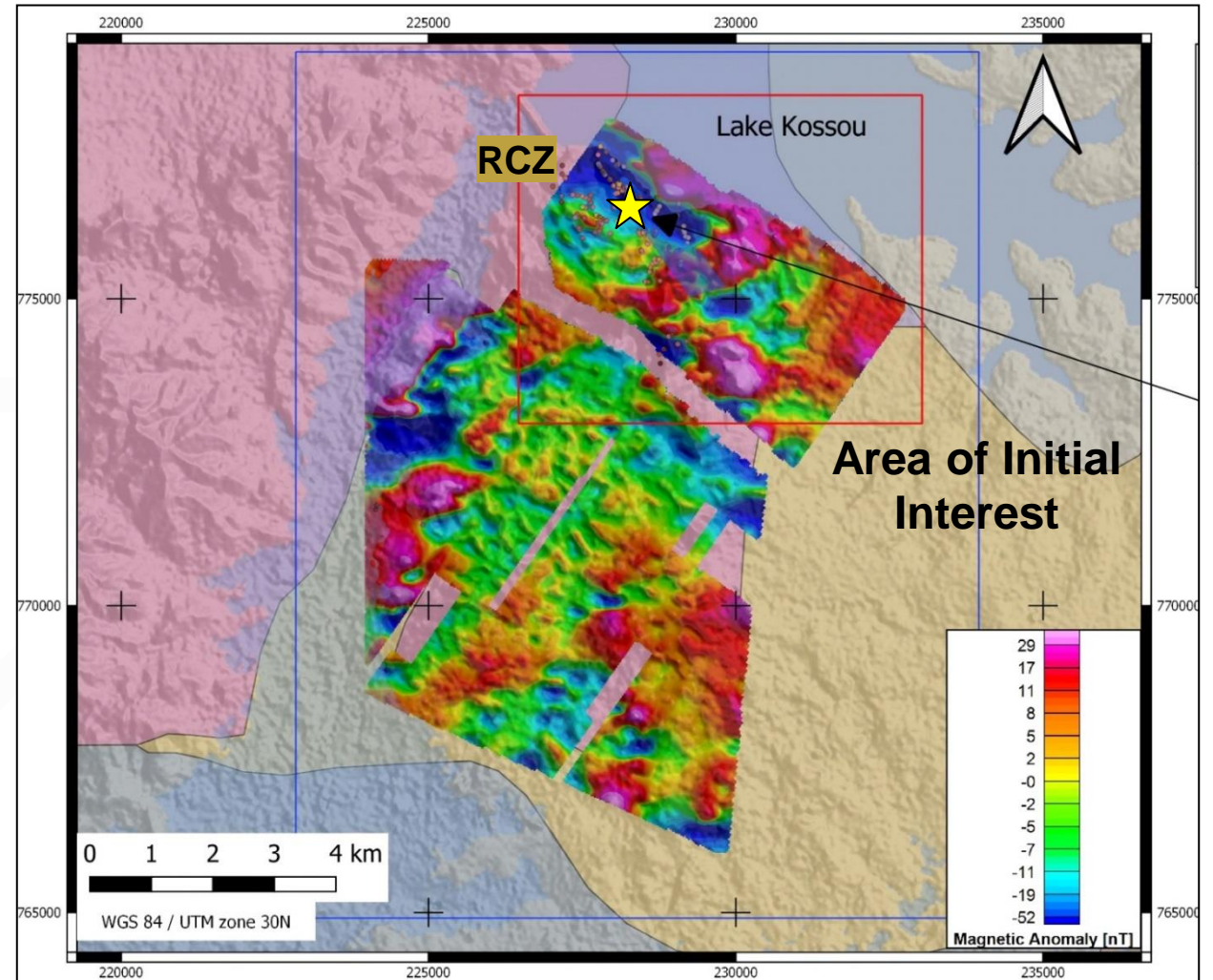
- ✓ Initial work in 2016 identified area of significant visible gold in historic alluvial/colluvial work zone
- ✓ 164 pits were dug, material was washed and gold points counted
- ✓ 155 contained significant visible gold



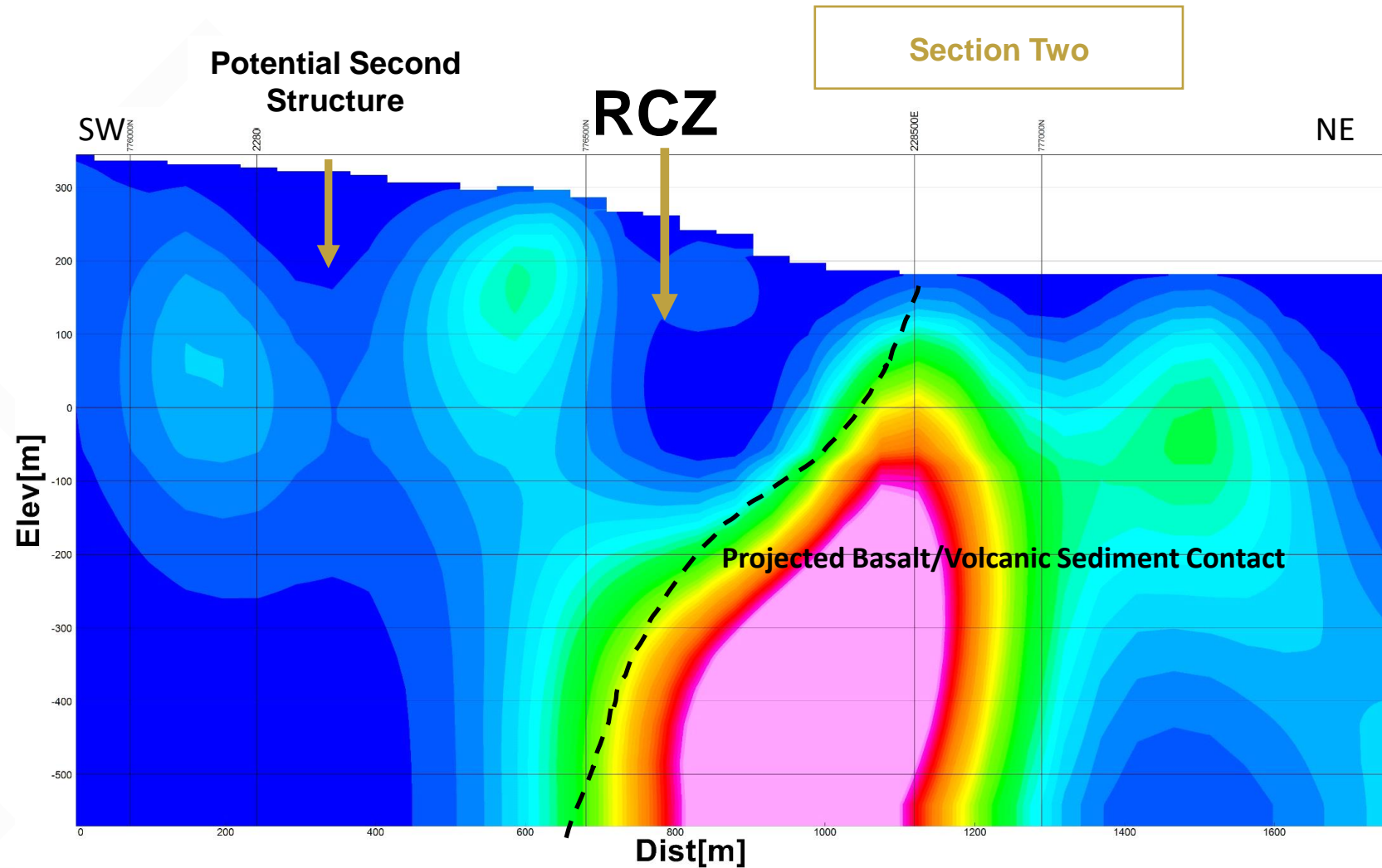
# Magnetic Survey

## Drone Survey

- ✓ Area: 62 km<sup>2</sup>
- ✓ Surveyed 1,195.4 Line Kms
- ✓ 50 m line spacing
- ✓ Mean Terrance Clearance of 62.3 m
- ✓ Confirmed structural break through RCZ
- ✓ Several structures have potential to host gold mineralization
- ✓ Southern portion of property remains unexplored to date

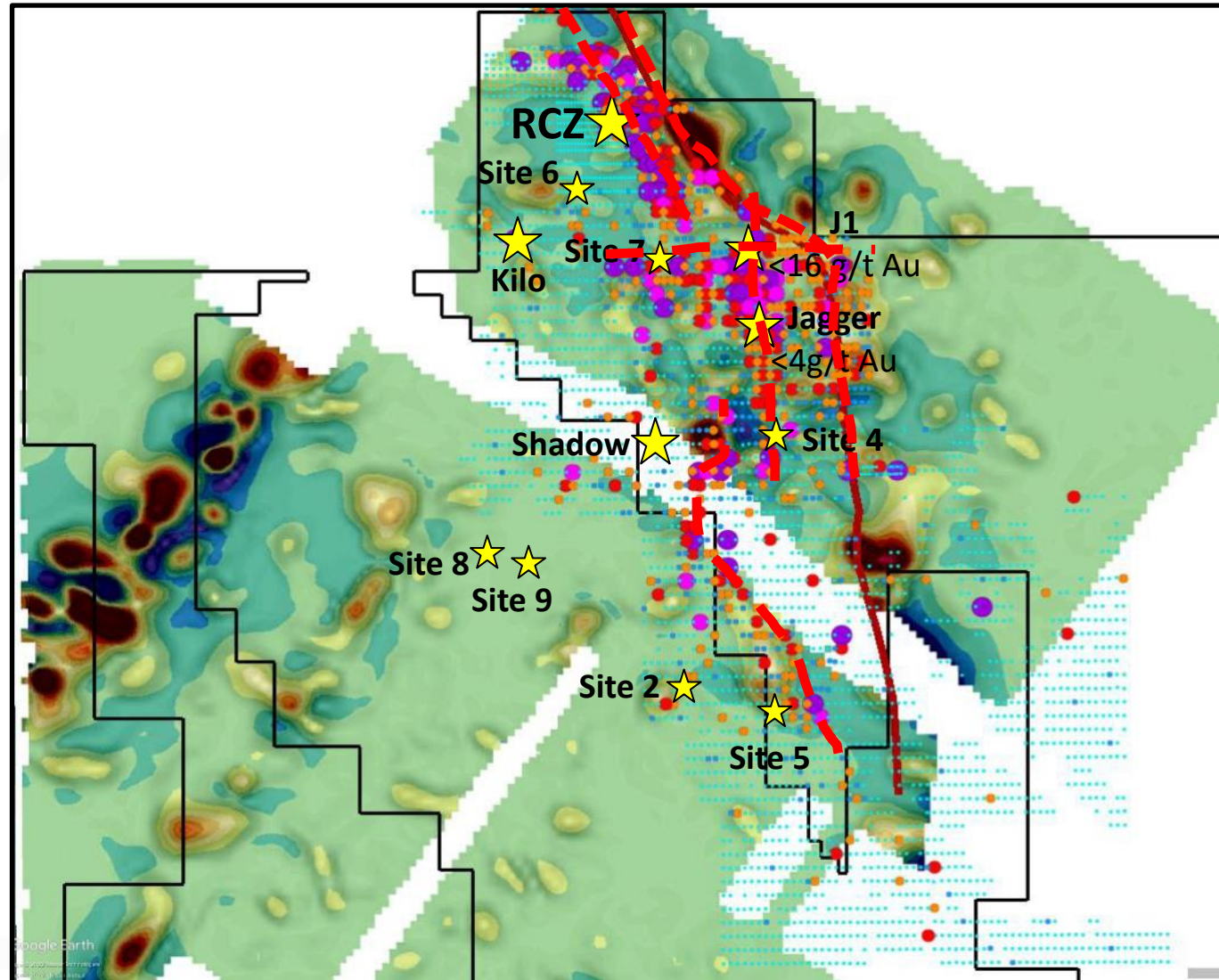


# 2020 Magnetic Survey





# RTP<sup>1</sup>/1<sup>st</sup> Derivative Interpretation with Soil Results



## Rock Sample and Trench Sample Analytical Procedures

All rock samples collected between 2020 and 2022, with the exception of samples 006801 to 007463 and 006706 to 006736, were analysed at ALS Laboratories in Yamoussoukro. The samples were prepared using "PREP-31B" (Crush to 70% less than 2mm, riffle split off 1kg, pulverise split to more than 85% passing 75 microns). After which samples were analysed for gold using "Au-AA26" (by fire assay and AAS 30g sample) and for multi-element assay using "ME-ICP61".

All samples analysed at the SGS facility in Yamoussoukro using a 50 g Fire Assay with an AA finish (FAA505 with prep code PRP87). Samples assaying greater than 5.0 g/t Au were re-submitted for Fire Assay with Gravimetric finish (FAG505). Those values were considered final. All QAQC control samples returned values within acceptable limits. SGS is 17025 accredited and are completely independent from Kobo.

## RC Sampling Analytical Procedures

One-metre composite samples of RC chips were sent to the MSALabs facility in Yamoussoukro where the entire sample was dried and split into 500 g subsample for analysis (prep code CRU-CPA). Sample splits were then analysed for gold using PhotonAssay™ (CPA-Au1). QAQC procedures for the drill program include insertion of a certificated standards every 20 samples, a blank every 20 samples and a duplicate sample (split of the 1 m original sample) every 20 samples. All QAQC control samples returned values within acceptable limits. MSALabs are ISO 17025 and ISO 9001 certified and are completely independent from Kobo.





# KOBO RESOURCES

## CONTACT INFORMATION

Edward Gosselin  
Chief Executive Officer and Director  
[info@kobores.com](mailto:info@kobores.com)

[koboresources.com](http://koboresources.com)

TSX.V: **KRI**

